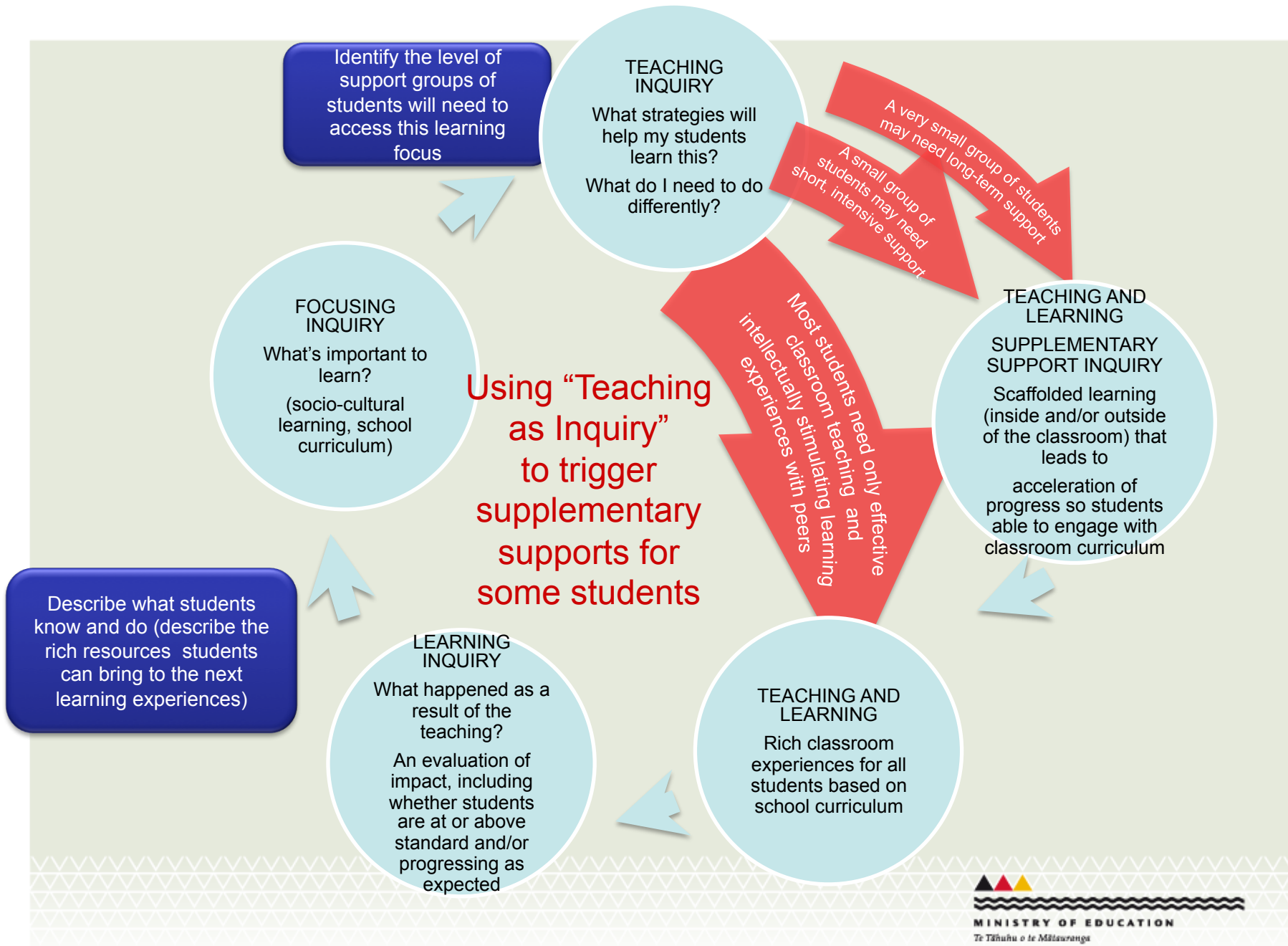




Using “Teaching as Inquiry” to trigger supplementary supports for some students

Targeted & supplementary supports for *some* students to ensure there is achievement for *all* students





A three-tier model of support that builds on the strengths of all students

Tier 3: Intensive response

A few students will access this during their schooling

Tier 2: Teaching to accelerate learning

Some students will access this at some stage in their schooling

Tier 1: Effective classroom teaching

All students will access Tier 1 support for successful learning and achievement outcomes.

Outcomes for students when all three tiers are aligned to the school curriculum

