



PASIFIKA SUCCESS

is a shared responsibility

Dr Lesieli Tongati'o, Pule Ma'ata Pasifika
Fuetanoa Kose Seinafo, Southern Regional Pasifika Education Coordinator

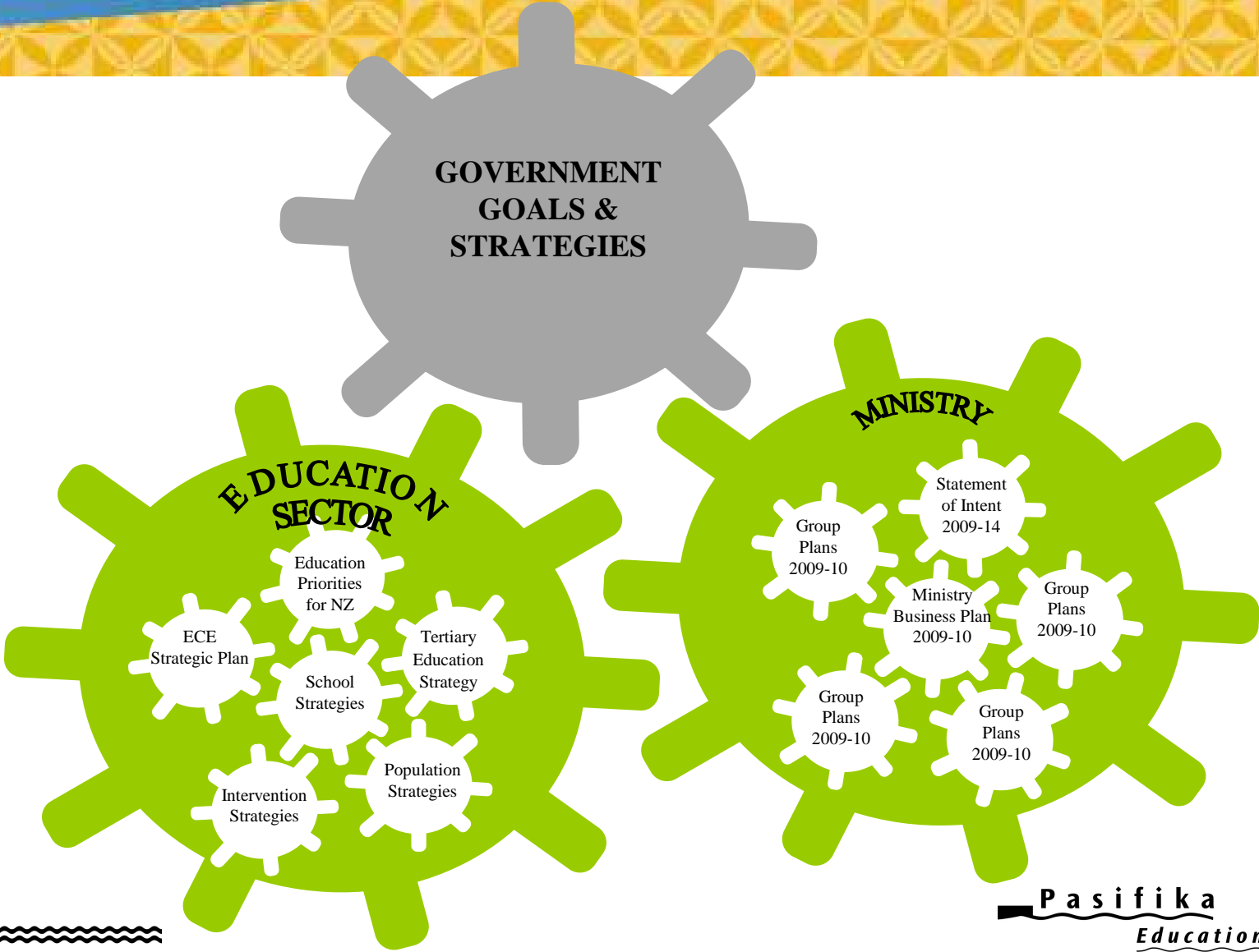
Session Format

- Pasifika Education Plan 2009 - 2012
- Southern Achievement Profile
- Effective Pasifika Practices
- Talanoa One
- Talanoa Two

PLD Provision for Pasifika Learners Is:

- Making sure that pedagogical practices enable Pasifika learners to achieve in education as well as have strong languages, cultures and identities
- Having/growing Pasifika capacity, being Pasifika capable and competent
- Believing that you can make a real and positive difference to Pasifika education outcomes
- Being connected and responsive

Contexts - Authorising Environments



Contexts - Pasifika Population

- Young, fast growing and diverse
- 7.2% of the total population
- 60% is NZ born
- 67% live in Auckland
- 49% are Samoan
- 77% earn under \$50,000 p/a
- 44% had no qualifications in 2007



Pasifika Education Plan 2009-2012

Vision

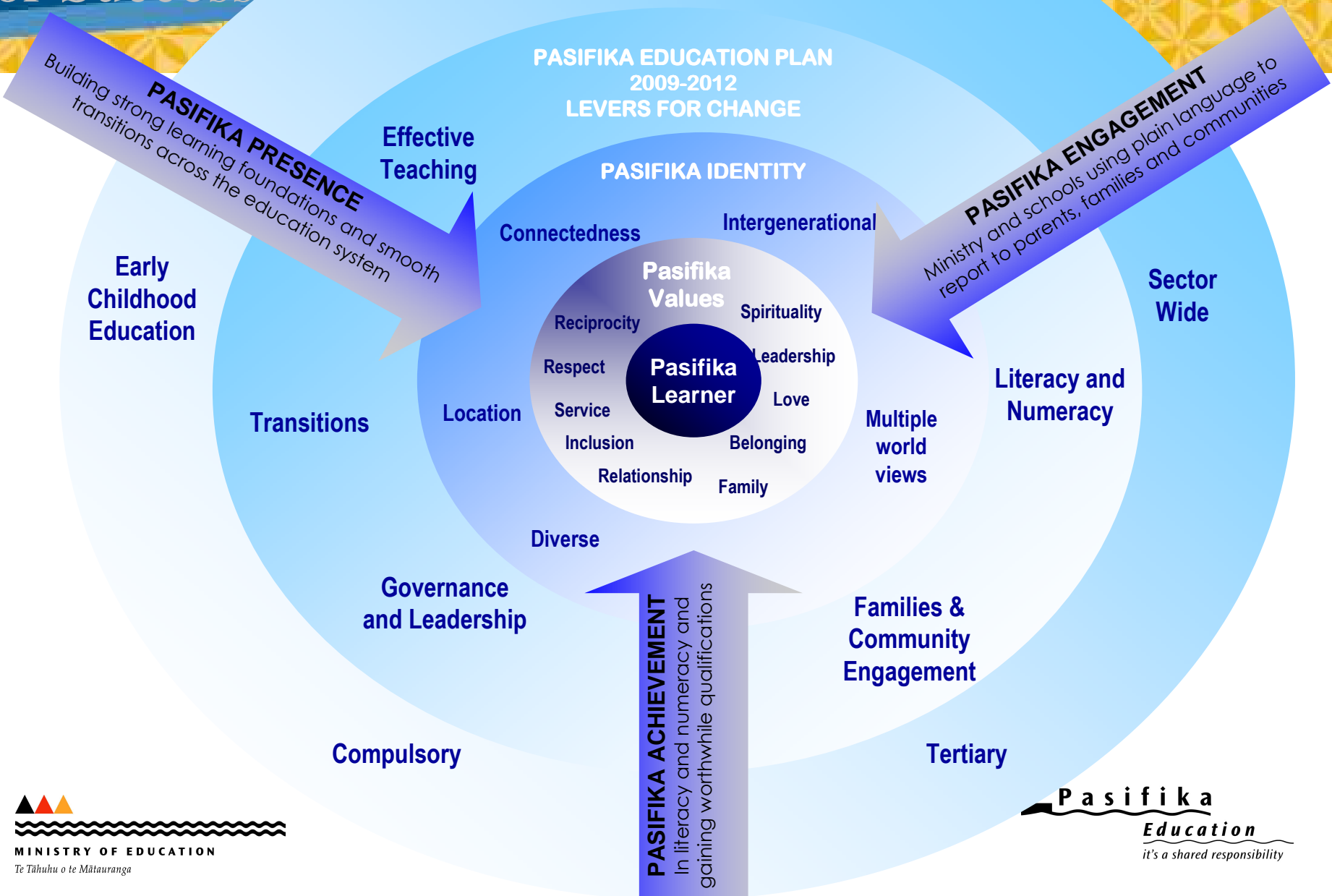
Doing Well for Self, Family, Communities, Aotearoa New Zealand, the Pacific Region and the World

Pasifika Education Plan

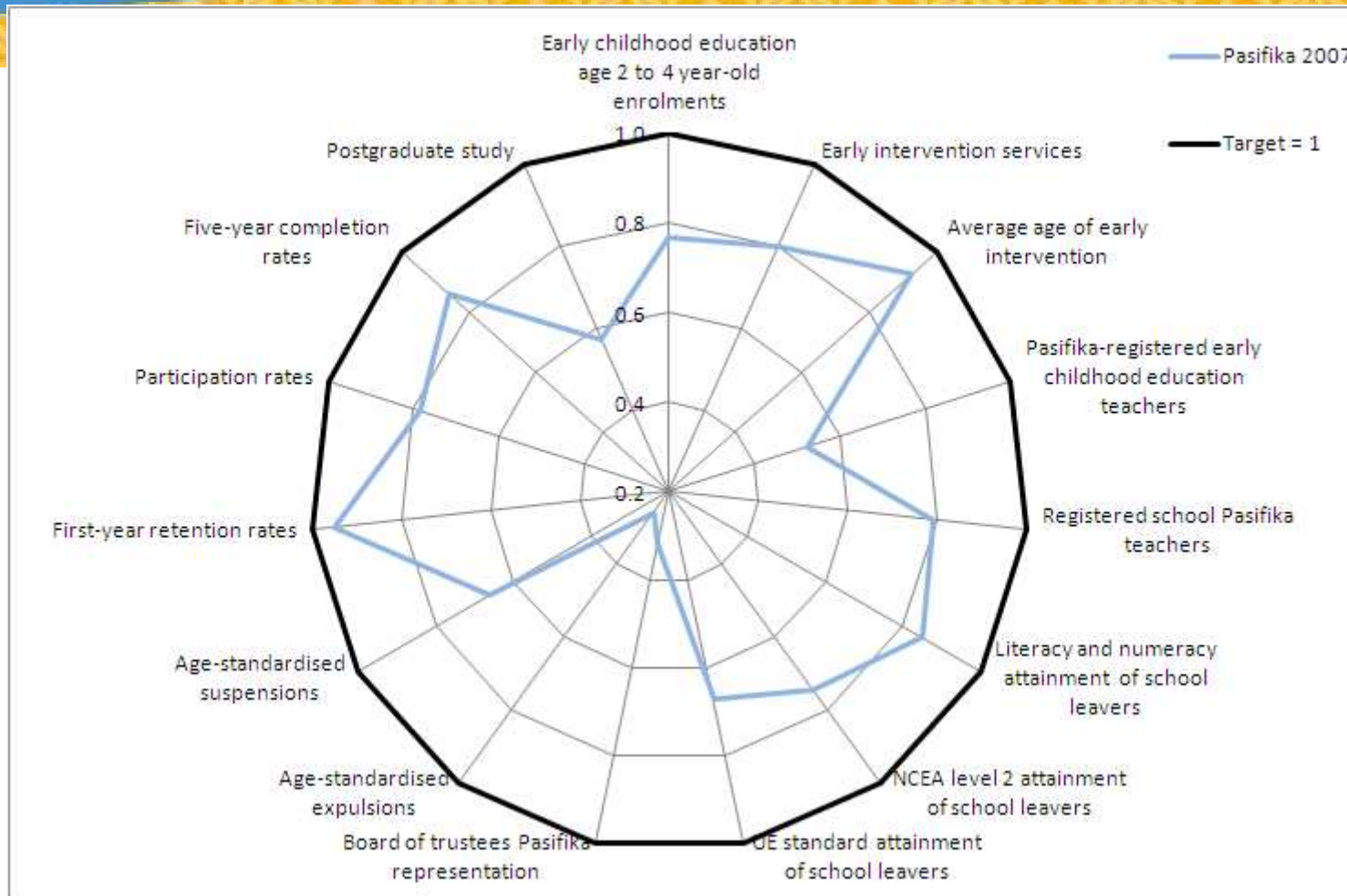
- Organised into four sections – ECE, Compulsory, Tertiary, Education Sector-wide
- Focus areas, goals, targets, actions
- Shared responsibility and accountability
- Annual monitoring and reporting considers:
 - Effort – How much did we do?
 - Quality – How well did we do it?
 - Effect – Is anyone better off?
 - Next steps
 - Risks and mitigating strategies
 - Research and evidence

Pasifika Compass for Success

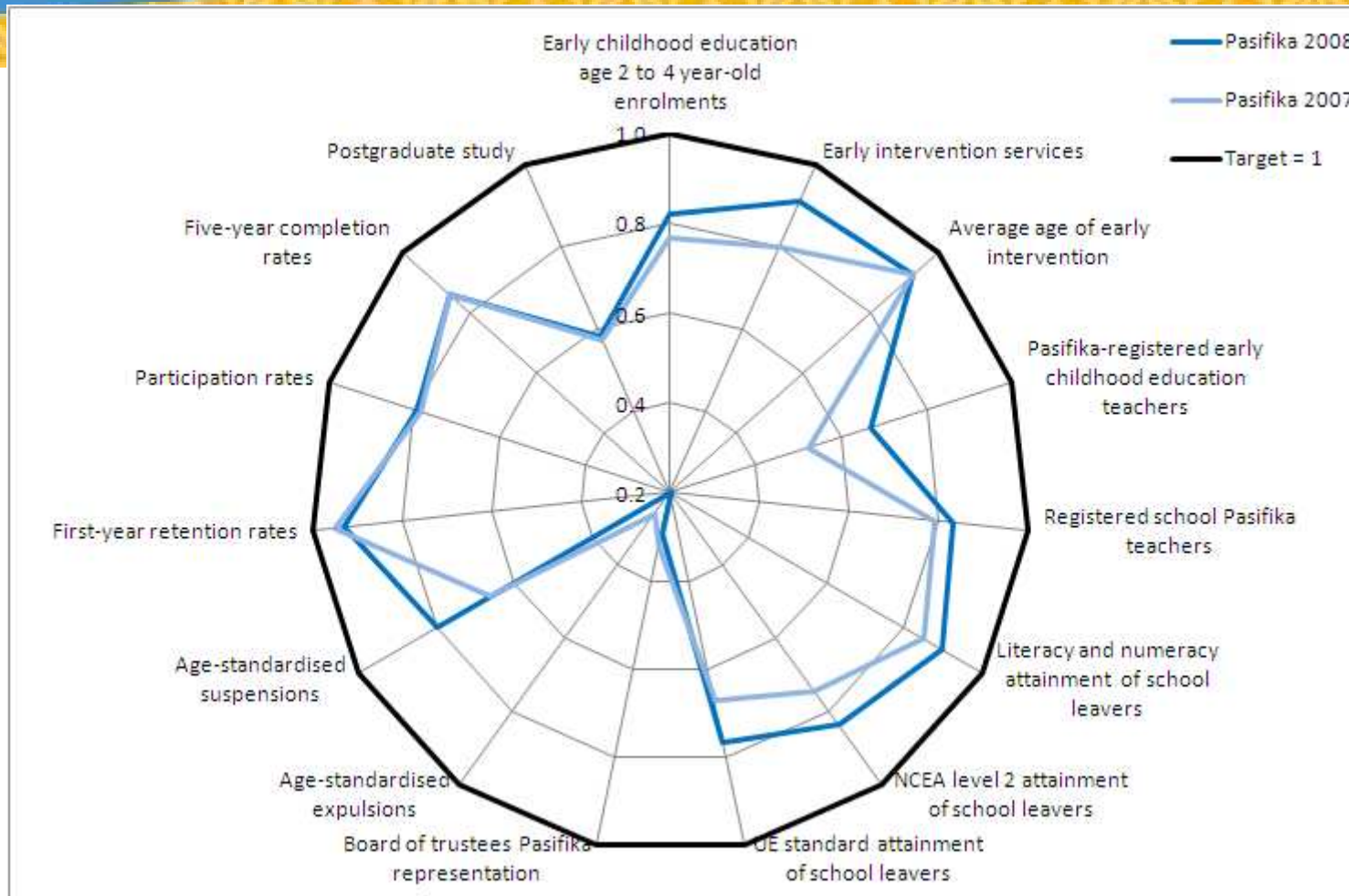
NEW ZEALAND EDUCATION SYSTEM



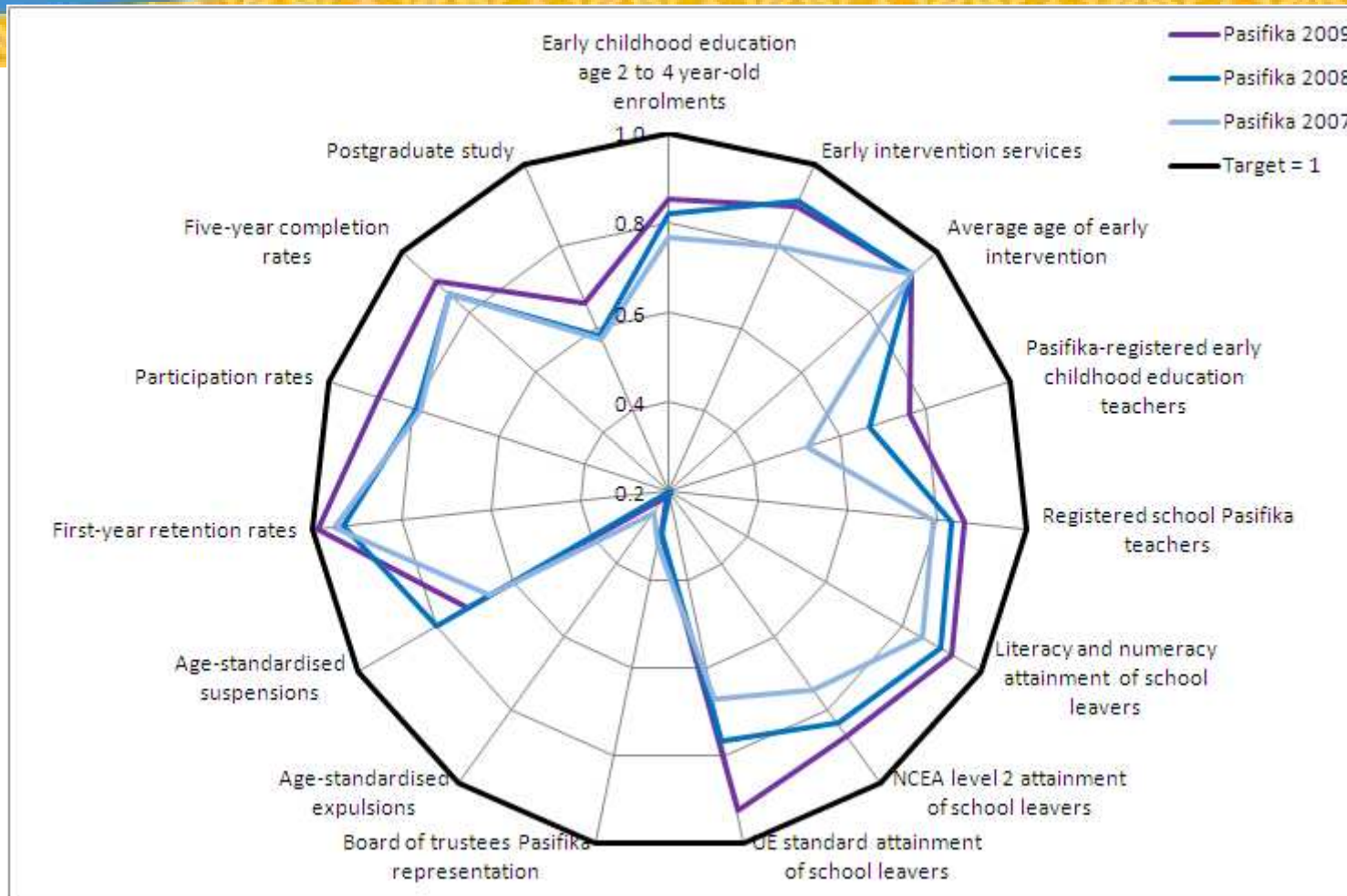
Progress Against Targets



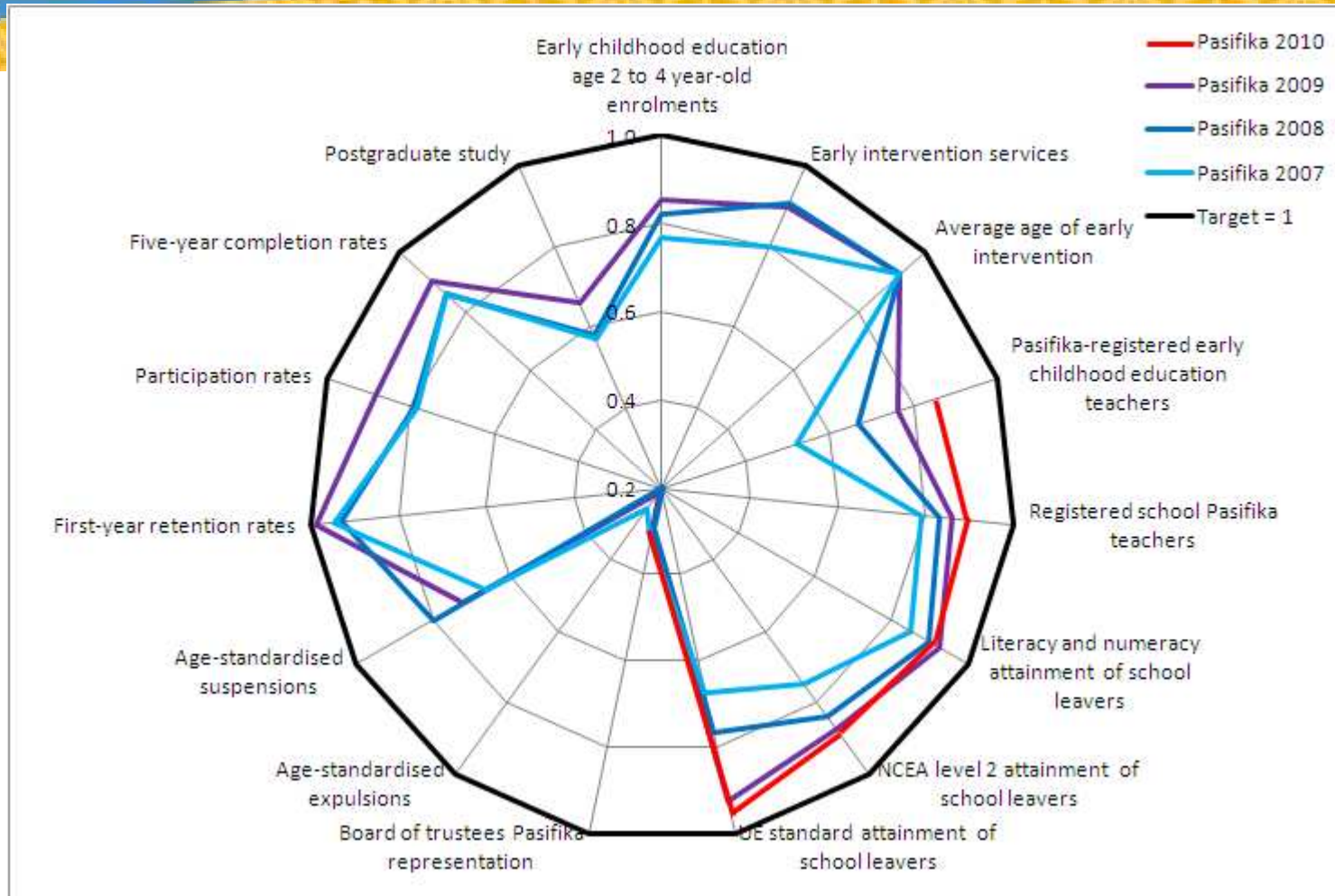
Progress Against Targets



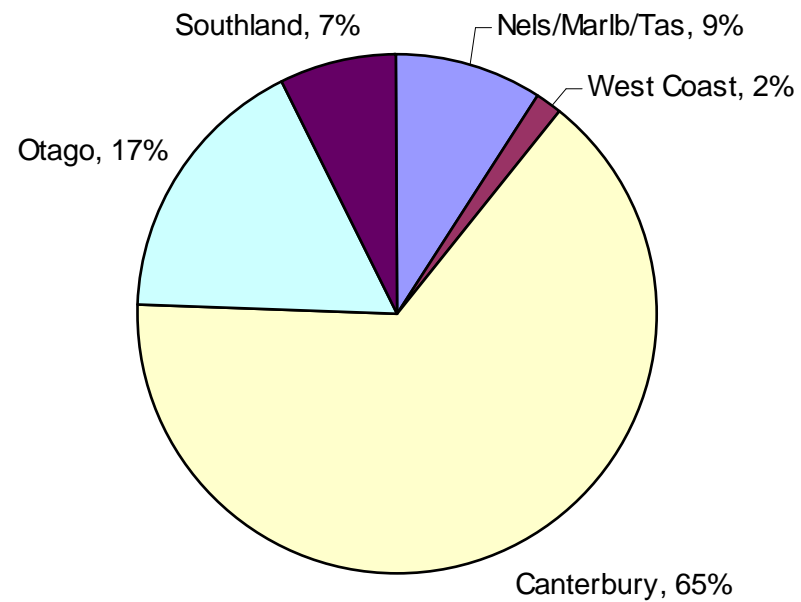
Progress Against Targets



Progress Against Targets



Pasifika Students in the Southern Region



Comparing School Leavers' Achievement, Southern Region in 2009

100 Pasifika Students

- 4 left school with no qualifications
- 80 left school with NCEA Level 1 and above qualifications
- 58 left school with NCEA Level 2 and above qualifications
- 24 left school with University Entrance qualifications

100 Non-Pasifika Students

- 4 left school with no qualifications
- 87 left school with NCEA Level 1 and above qualifications
- 73 left school with NCEA Level 2 and above qualifications
- 47 left school with University Entrance qualifications.

Issues and Challenges

- ❖ Scaling up what works
- ❖ Urgency
- ❖ Relationships and partnerships
- ❖ Leadership and governance
- ❖ Involving parents, families and communities
- ❖ Research and evidence
- ❖ Creating and sustaining system-wide change
- ❖ Fiscal challenges

Talanoa One

- As PLD providers, what current practices are you using to ensure schools are equipped to raise Pasifika achievement further?
- Describe three ways you see culturally responsive pedagogy reflected in the schools you work with.

Profile of Effective Practices

- Janice Tofia, Principal Forbury School

Talanoa Two

- Discuss and Complete your PLD Pasifika Action Plan

PLD Pasifika Action Plan

List 5 actions your PLD organisation is going to take to become more Pasifika responsive?	What do you need to do to increase your capacity or capability to achieve this?	Use the timeframe key below to commit to these actions

For Further Information

- Ministry of Education Websites
- Pasifika Pages
- Pasifika on TKI
- Education Counts
- Best Evidence Synthesis
- Education Gazette
- Pasifika Education Plan
- Pasifika Education Plan Monitoring Reports