



PASIFIKA SUCCESS

is a shared responsibility

Dr Lesieli Tongati'o, Pule Ma'ata Pasifika
Vaiolupe Talakai, Team Leader Pasifika, Auckland

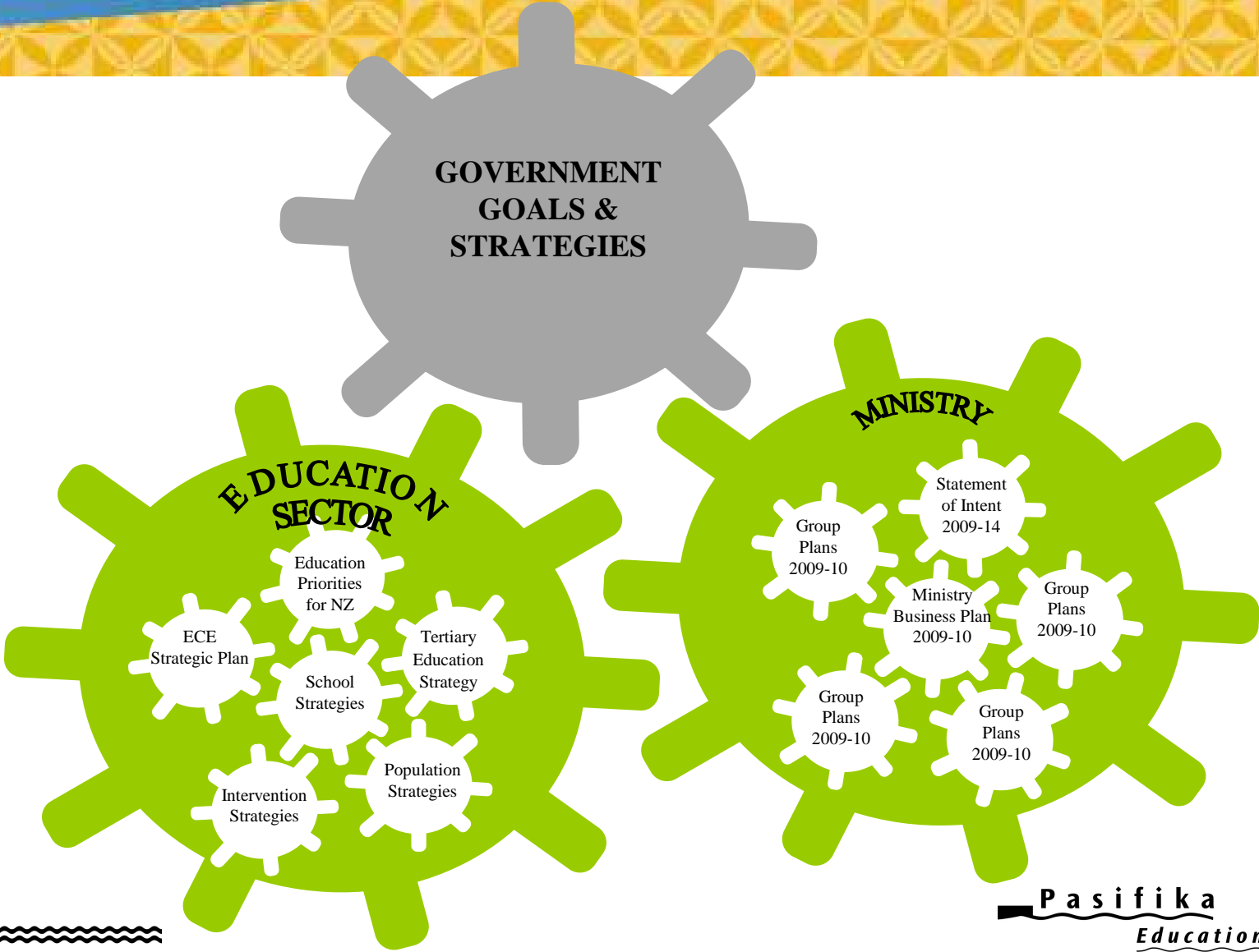
Session Format

- Pasifika Education Plan 2009 - 2012
- Northern Pasifika Profile
- Effective Pasifika Practices
- Talanoa One
- Talanoa Two

PLD Provision for Pasifika Learners Is:

- Making sure that pedagogical practices enable Pasifika learners to achieve in education as well as have strong identities, languages and cultures
- Having/growing Pasifika capacity, being Pasifika capable and competent
- Believing that you can make a real and positive difference to Pasifika education outcomes
- Being connected and responsive

Contexts - Authorising Environments



Contexts - Pasifika Population

- Young, fast growing and diverse
- 7.2% of the total population
- 60% is NZ born
- 67% live in Auckland
- 49% are Samoan
- 77% earn under \$50,000 p/a
- 44% had no qualifications in 2007

Profile of 100 Pasifika students starting school in 2011

Pasifika	Non Māori + non Pasifika	Involvement Indicator
85	98	Will have participated in early childhood education prior to school
93	72	Will go to school in the North Island
71	17	Will attend a decile 1-4 school
16	4	Will not have achieved basic literacy and numeracy skills by age 10
2	1	Will be frequent truants by years 9 and 10
3	2	Will be stood-down from school
85	83	Will continue studying at school until at least their 17 th birthday
8	3	Will leave secondary school without a qualification
10	5	Will become disengaged from education, employment or training by age 17
60	79	Will leave school with NCEA Level 2 or better
25	54	Will leave school with a university entrance standard
12	29	Will attain a bachelors level degree by age 25
3		Will enter Pasifika medium education



Pasifika Education Plan 2009-2012

Vision

Doing Well for Self, Family, Communities, Aotearoa New Zealand, the Pacific Region and the World

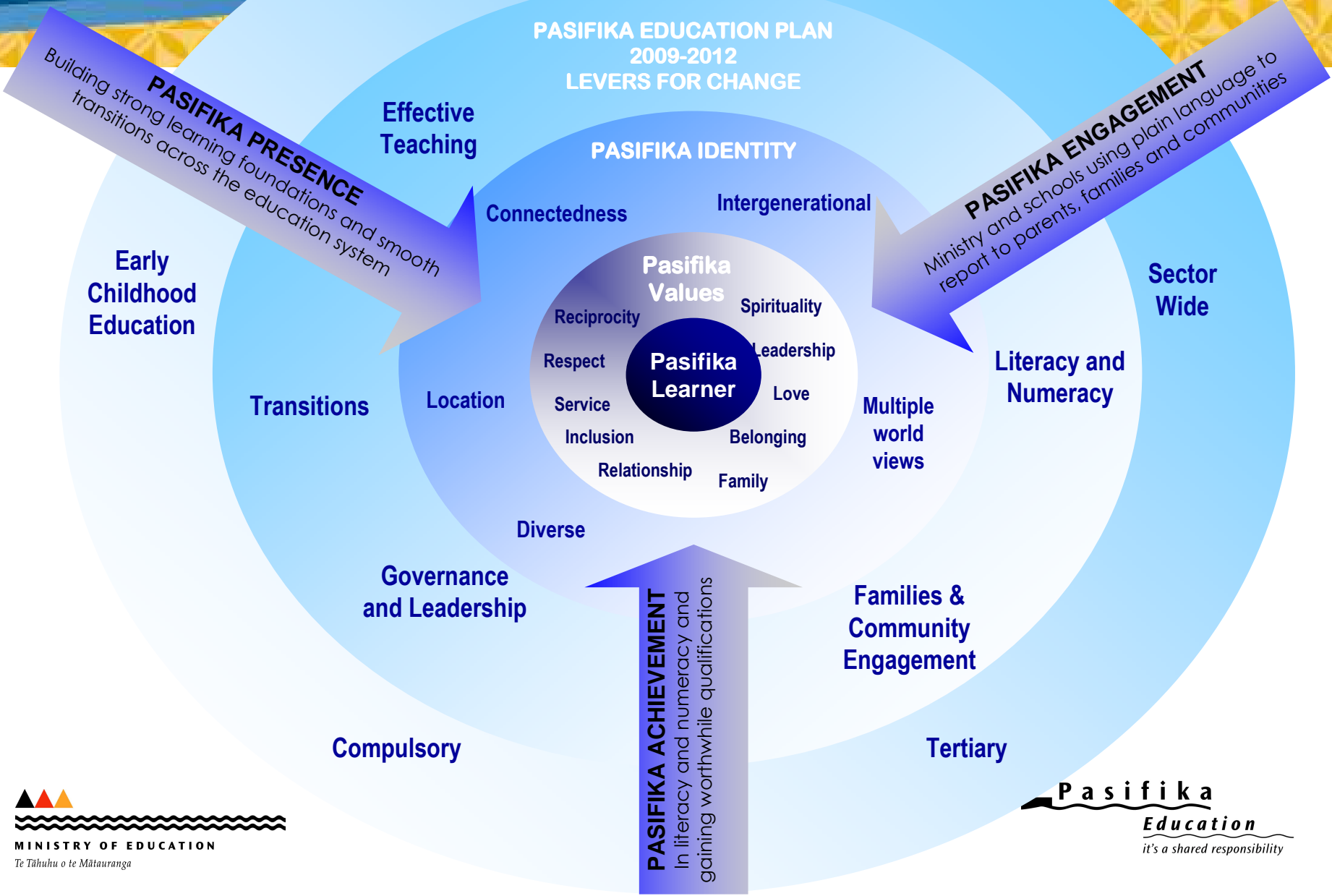
Pasifika Education Plan

- Organised into four sections – ECE, Compulsory, Tertiary, Education Sector-wide
- Focus areas, goals, targets, actions
- Shared responsibility and accountability
- Annual monitoring and reporting considers:
 - Effort – How much did we do?
 - Quality – How well did we do it?
 - Effect – Is anyone better off?
 - Next steps
 - Risks and mitigating strategies
 - Research and evidence

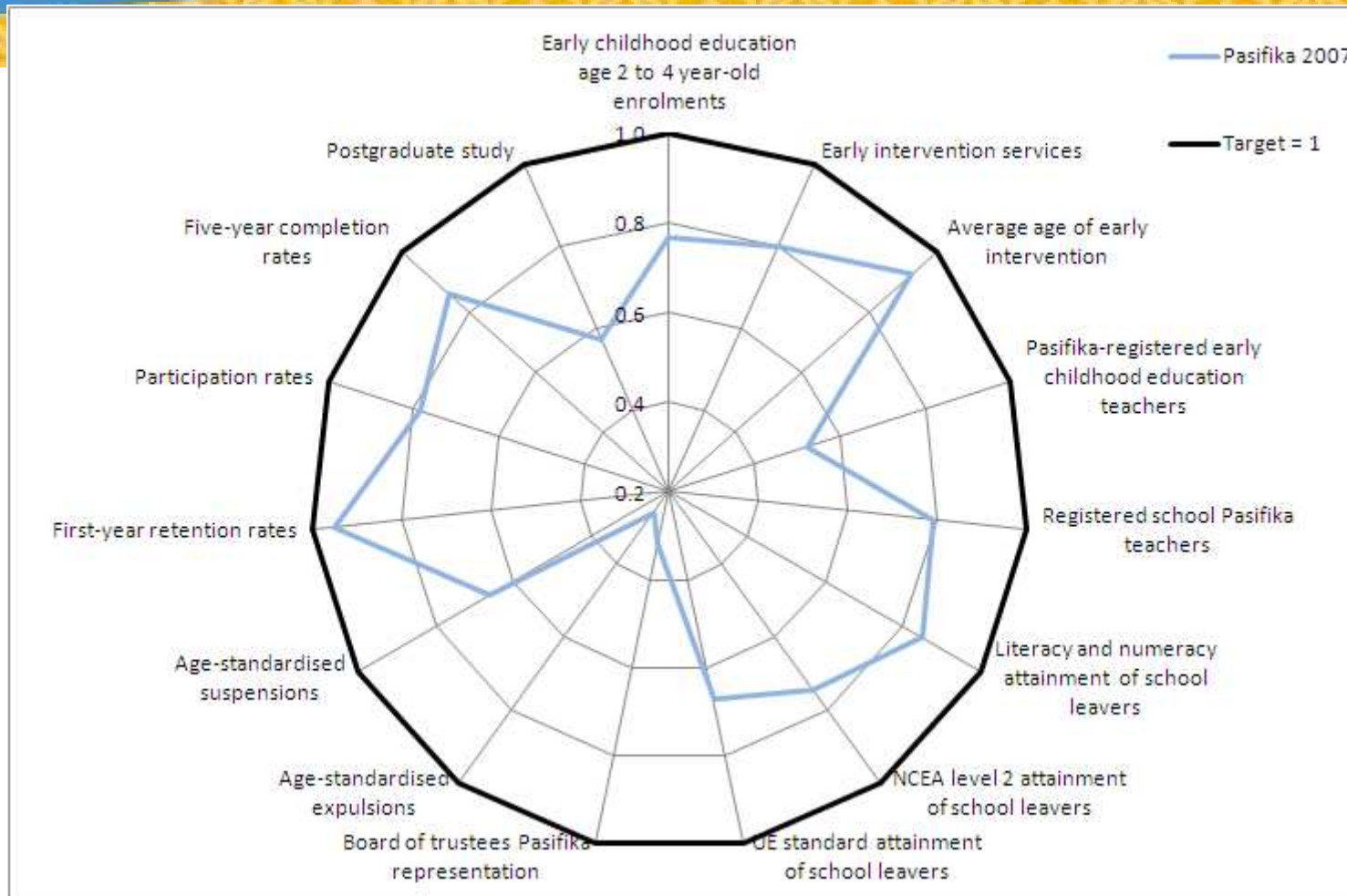
Pasifika Compass for Success

NEW ZEALAND EDUCATION SYSTEM

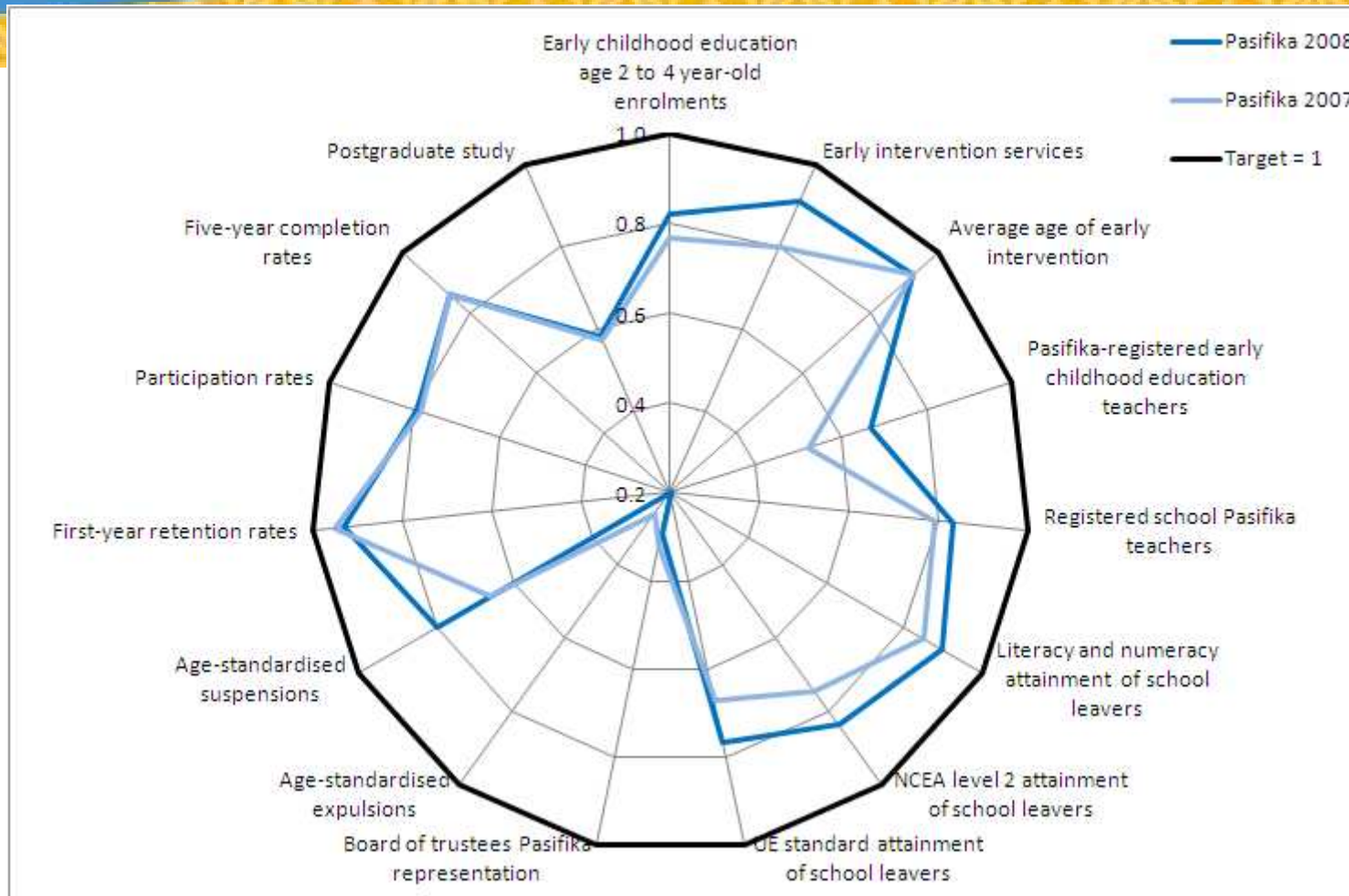
PASIFIKA EDUCATION PLAN
2009-2012
LEVERS FOR CHANGE



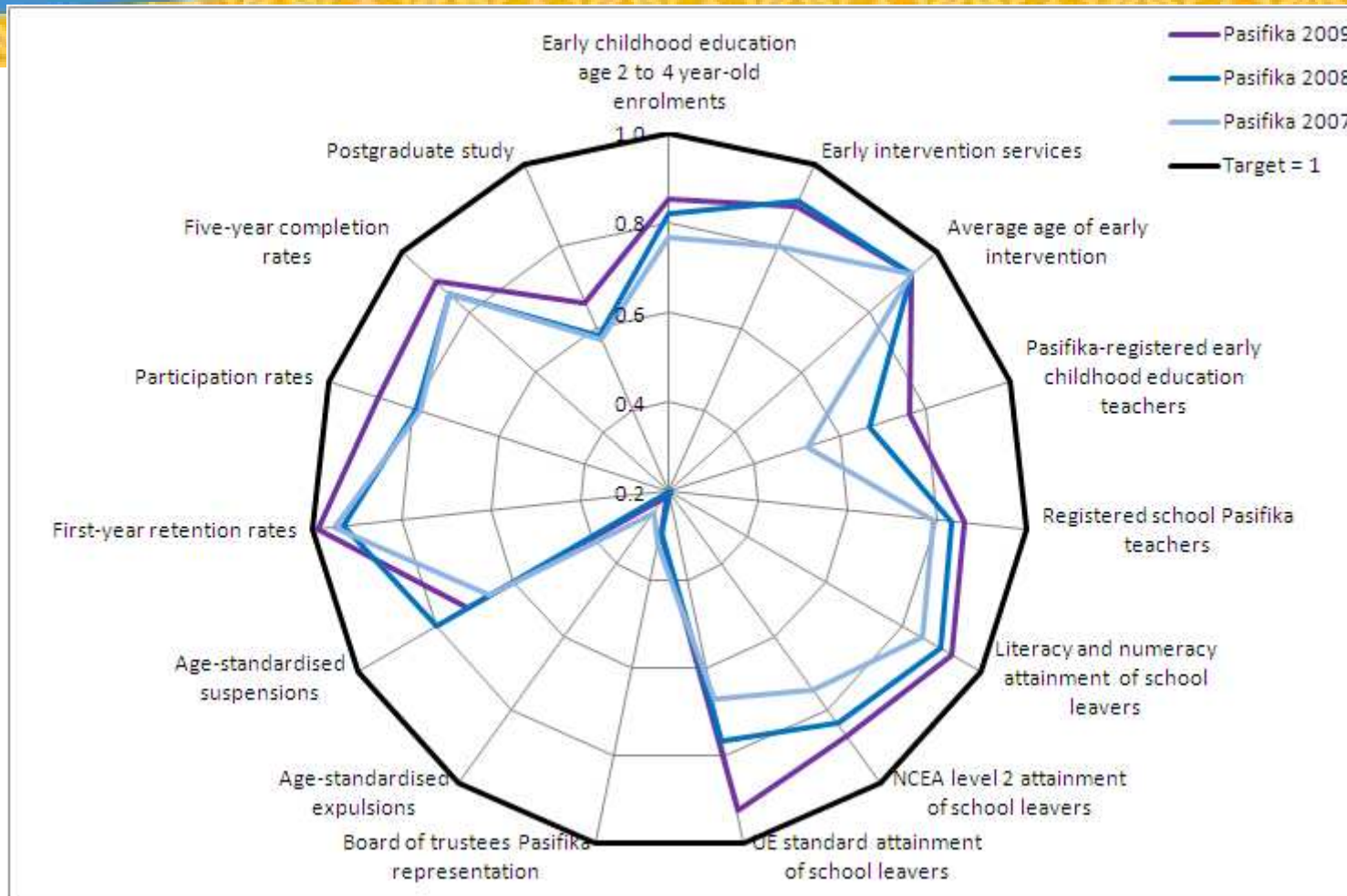
Progress Against Targets



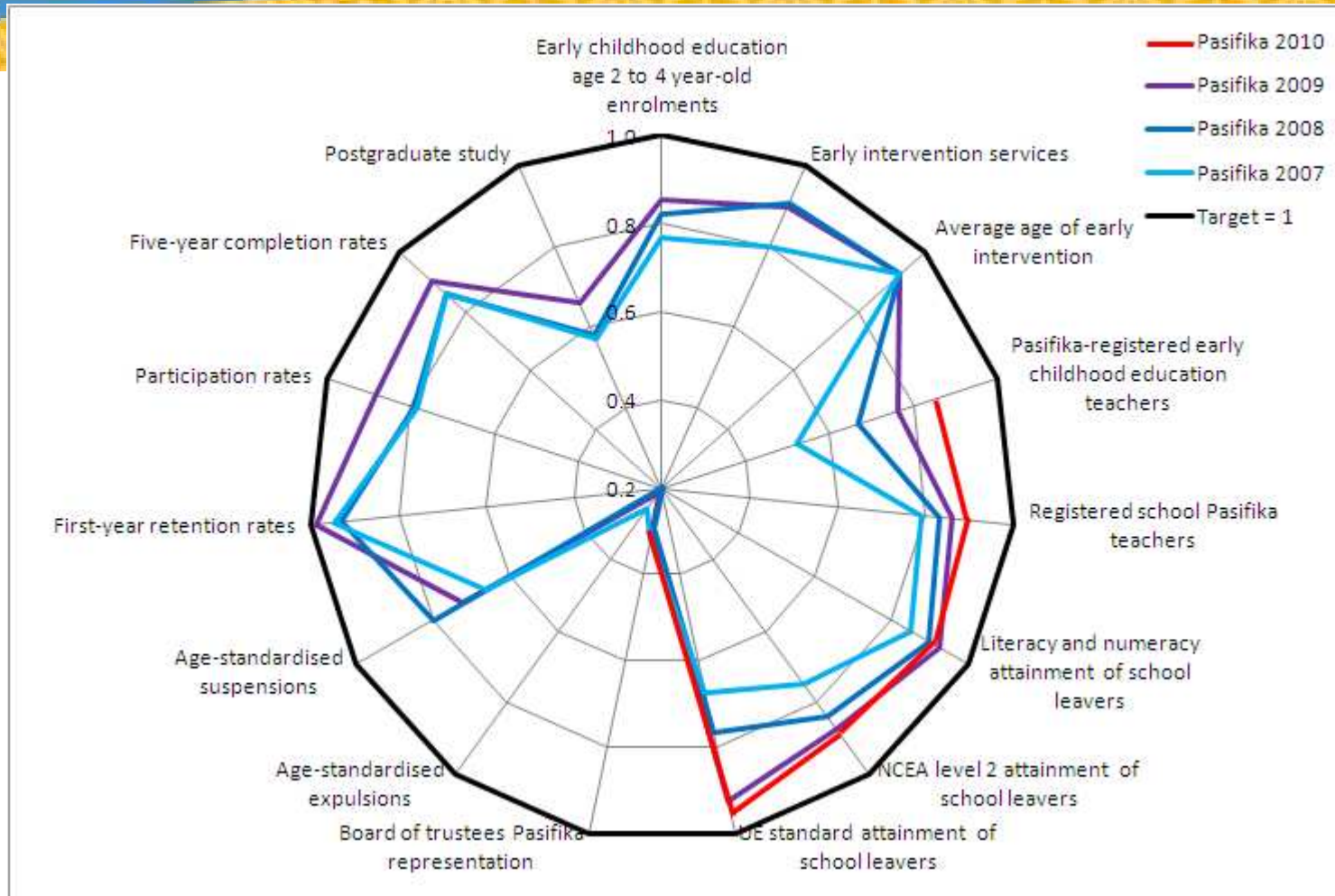
Progress Against Targets



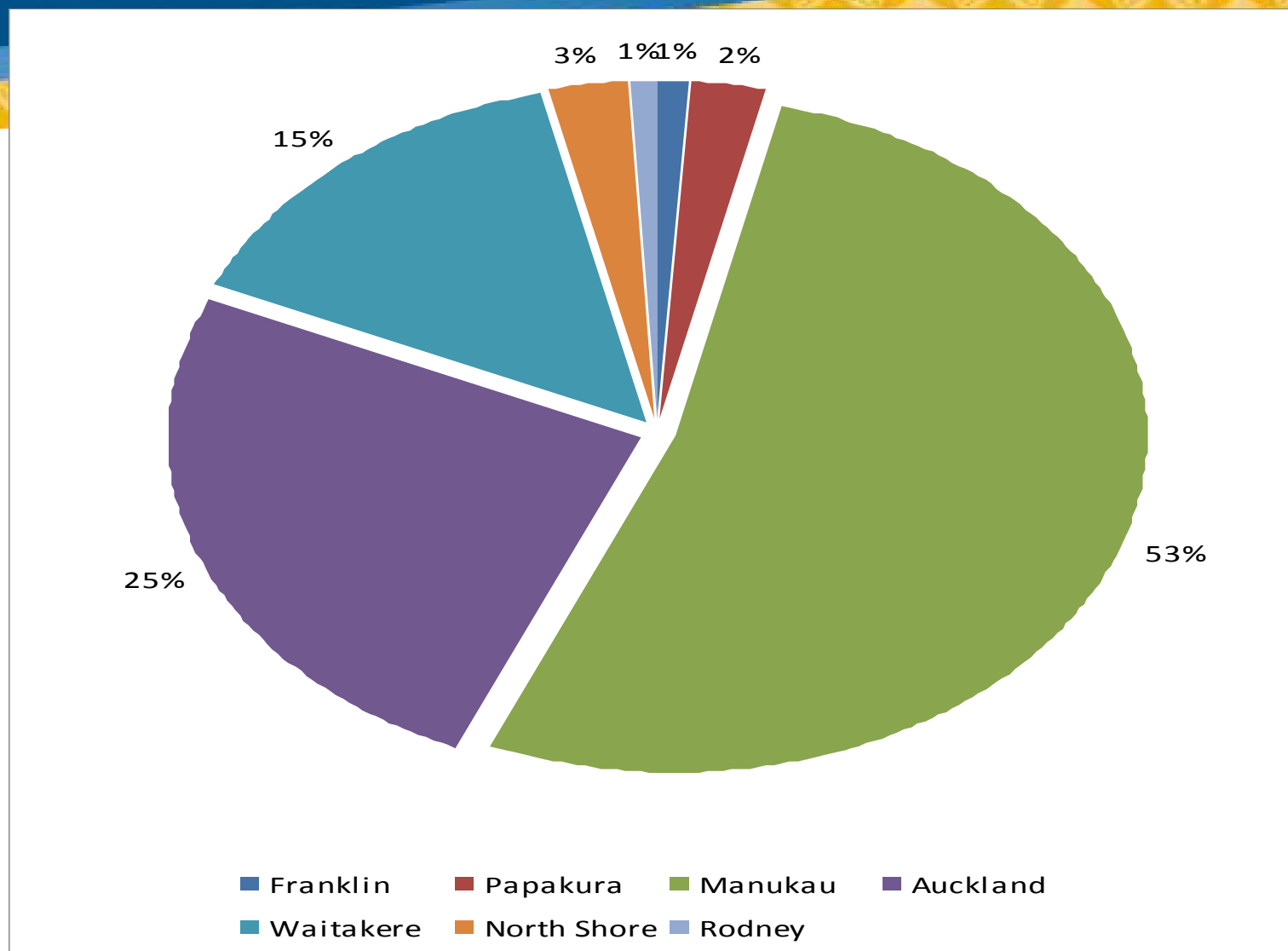
Progress Against Targets



Progress Against Targets



Pasifika Student Profile in the Northern Region



School Leavers' Achievement, Northern Region

100 Pasifika students

- 5 left school with little or no formal attainment;
- 84 left school with NCEA Level 1 or above;
- 67 left school with NCEA Level 2 or above
- 29 left school with UE

100 non-Pasifika students

- 4 left school with little or no formal attainment;
- 88 left school with NCEA Level 1 or above
- 77 left school with NCEA Level 2 or above
- 54 left school with UE

Challenges

- ❖ Scaling up what works
- ❖ Urgency
- ❖ Relationships and partnerships
- ❖ Leadership and governance
- ❖ Involving parents, families and communities
- ❖ Research and evidence
- ❖ Creating and sustaining system-wide change
- ❖ Fiscal challenges

Talanoa One

- As PLD providers, what current practices are you using to ensure schools are equipped to raise Pasifika achievement further?
- Describe three ways you see culturally responsive pedagogy reflected in the schools you work with.

Profile of Effective Practices

- Barbara Ala'alatoa, Principal, Sylvia Park School

Talanoa Two

- Discuss and Complete your PLD Pasifika Action Plan

PLD Pasifika Action Plan

List 5 actions your PLD organisation is going to take to become more Pasifika responsive?	What do you need to do to increase your capacity or capability to achieve this?	Use the timeframe key below to commit to these actions

Next Steps

- growing teachers' knowledge base, about their own practices, and about the changing worlds students are living in;
- knowing data - education and the communities teachers are working in, about national goals, trends and changes;
- needing to have accountability mechanisms that are aligned with widely understood goals and strategies;
- understanding and tapping into the social capital within neighbourhoods;
- making better linkages across all the areas of life that students rely on for success.

For Further Information

- Ministry of Education Websites, Pasifika Pages
- Pasifika on TKI
- Education Counts
- Best Evidence Synthesis
- Education Gazette
- Pasifika Education Plan 2009-2012
- Pasifika Education Plan Monitoring Reports